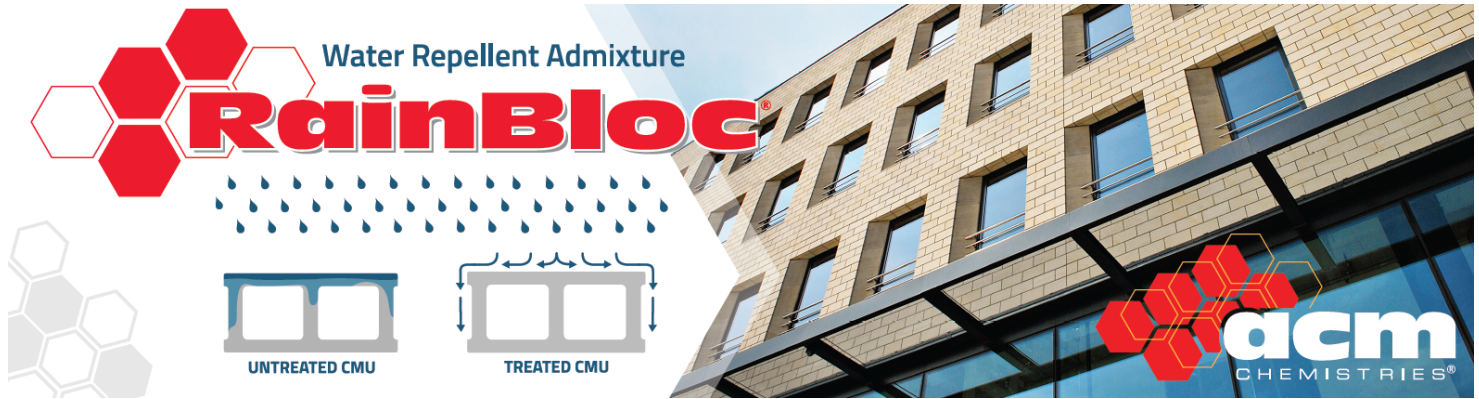




# Water Repellent System for Concrete Masonry

RainBloc® Water Repellent System Protects Concrete Masonry Walls from Wind Driven Rain and Moisture Penetration



## The RainBloc system includes integral water repellent and mortar additives for Architectural Concrete Masonry Units (CMU) and mortar

- Individual masonry units have RainBloc integral water repellent admixtures added during manufacture.
- RainBloc for Mortar is added to mortar at the jobsite.
- Highly recommended for single wythe masonry walls and lightweight masonry units.

## RainBloc System Benefits

- Decades of successful water repellent masonry projects prove the system works.
- Reduced wind driven rain and moisture penetration at the surface.
- Improved concrete quality and reduced voids in the concrete matrix combines with anti-wicking action to limit migration of moisture through masonry units.
- Polymeric material which does not alter the finished appearance of the block.
- Lasts the lifetime of the unit.
- Reduced potential for efflorescence.

## RainBloc System Support for Certified Producers includes:

- American Institute of Architects (AIA) Continuing Education presentation “Designing for Moisture Protection in Masonry Walls”.
- Technical Bulletins to educate customers, installers and specifiers on water repellent masonry advantages.
- Downloadable water repellent CMU and mortar specifications for Architects.
- 1/2 to 2-day concrete technology training courses at your location or Norcross, GA.
- Learning Center videos and webinars available on demand at [acmchem.com](http://acmchem.com).
- Expert technical support on mix design, production, testing, building performance and more from experienced and knowledgeable industry leaders.



Technology  
& Innovation

Innovation is not just a buzz word for us. We Invest in new chemistries and the latest manufacturing methods and equipment to benefit our customers and strengthen the masonry industry.

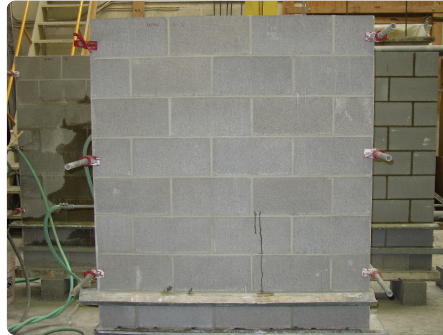
# RainBloc Performance

RainBloc certified producers undergo rigorous yearly qualification testing to ensure that water repellency performance is maintained. Specifiers and designers can be confident that RainBloc Certified CMU will perform as specified.

## Resistance to Wind Driven Rain



Untreated concrete masonry test wall (ASTM E514) after 72 hours

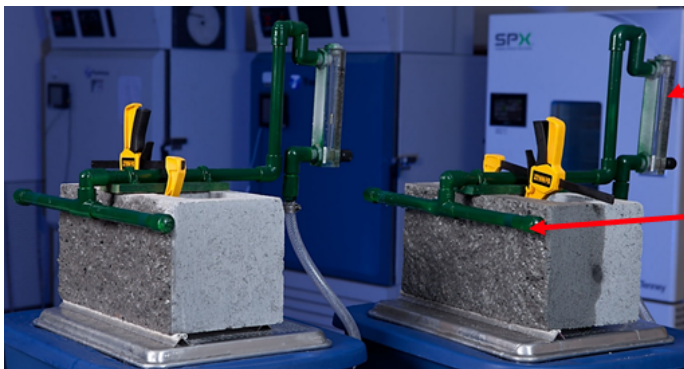


RainBloc system test wall (ASTM E514) after 72 hours

## ASTM E514 Testing

- Independent testing conducted by National Concrete Masonry Association (NCMA) Research and Development Laboratory.
- Aggressive ASTM E514 standard exposes test walls to simulated wind driven rain.
- RainBloc achieved Class E or excellent rating for wind driven rain resistance - the highest rating possible.

## Water Migration Testing



Flow Meter

Spray Bar

## Spray Bar Testing

- We recommend the use of inexpensive, visual evaluation spray bar testing as a moisture migration quality check.
- NCMA CMU-WR2 Test Method provides detailed instructions on how to perform and evaluate test results.
- ACM Chemistries provides complimentary spray bar test kits to our customers. Ask your ACM Chemistries Technical Services Representative about installing spray bar test equipment at your location.

## RainBloc for Mortar



- Increase mortar resistance to moisture ingress and wind driven rain
- Add at the construction site
- Side panel has volume indicators for easy and accurate measuring
- Meets or exceeds performance requirements for high quality mortar in ASTM E514 and ASTM C1384



ACM Chemistries, Inc.  
P.O. Box 920430 Norcross, GA 30010

770-417-3490 acmchem.com